



INDUSTRIAL PUMPS

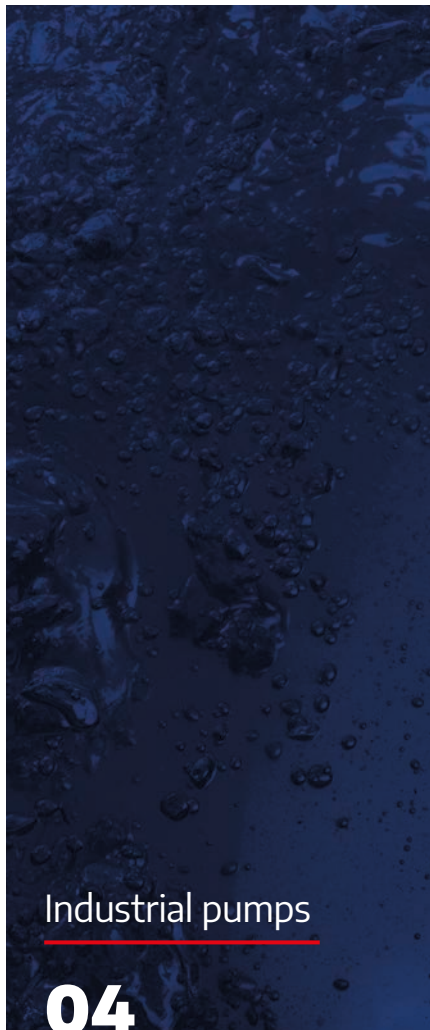
Herborner Pumpen –
Your reliable manufacturer of
industrial pumps.



INDUSTRIAL PUMPS

The conveying tasks of the industry have always been one of our main concerns. Based on our extensive understanding of tasks and processes, we offer customised solutions that meet even the highest demands. There are almost no limits for the deployment of our industrial pumps, due to which our high-tech solutions are particularly used for various conveyor tasks in industry and equipment engineering. The many variations of our block pump series herborner and UNIBLOCK, our proven sewage pumps and an extensive range of efficient vertical pumps, provide impressive evidence that we have the best suitable answers to all conveyor tasks of the industry.

TABLE OF CONTENTS

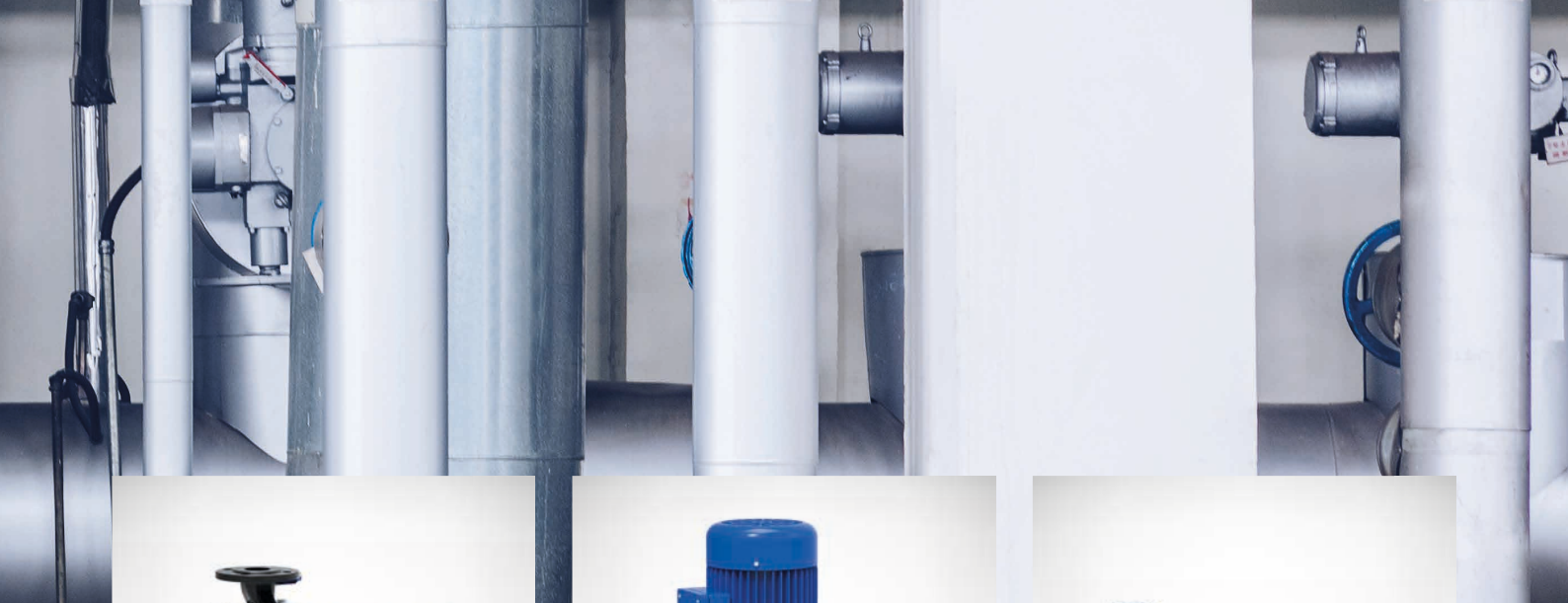


A close-up photograph of industrial pump machinery. The image shows several large, cylindrical metal components, likely parts of a pump or conveyor system. The lighting is dramatic, with strong highlights and deep shadows, emphasizing the metallic textures and complex mechanical structures. The background is a plain, light-colored wall.

PUMP SOLUTIONS

Efficient pumps have been an essential factor in the demanding daily routine in industry and equipment engineering for many years. As an experienced manufacturer of efficient pump solutions, we know the great challenges that industrial pumps face nowadays. Working at highly-sensitive locations within complex process structures sets very high requirements for both quality and performance of modern industrial pumps.

In addition to our high product quality, our customers particularly value our experience in the solution of complex conveyor tasks.



HERBORNER.F

(F-PM • F-C)

New standards are set by the latest generation of coated herborner.F block pumps with their unique 100% coating. They are suitable for all corrosive-free liquids without particles. Up to 500 μm coating provides an extremely smooth surface boosting the hydraulic efficiency of the pump by about 10% and offering energy savings over years. The pumps may be alternatively equipped with a permanent magnet (PM) or heat exchanger motor (C).



HERBORNER.D

(D-PM • D-C)

The coated herborner.D in-line block pump is suitable for all corrosive-free liquids without particles. Up to 500 μm coating provides an extremely smooth surface. Hydraulic efficiency is boosted by about 10%, offering energy savings over years. The pumps may be alternatively equipped with a permanent magnet (PM) or heat exchanger motor (C).



HERBORNER.F-L

The pump for special applications in the field of attractions or wherever bearing block pumps with a standard motor may be applied. In line with the modular system, herborner.F-L pumps also feature 100% coating with model-dependent corrosion resistance and maximum efficiency.



UNIBLOCK-GF (GF-PM • GF-C)

The water movement specialist. Whether in swimming pools, thermal water, water works or industrial applications, this pump is the perfect solution for all applications requiring high reliability, efficiency and flexibility. The pumps may be alternatively equipped with a permanent magnet (PM) or heat exchanger motor (C). According to the kind of liquid, different materials are available for this pump type.



UNIVERS-AYR

This space- and energy-saving block pump for high flow rates is suitable for different (water) applications.



HERBORNER.S

The coated, self-priming centrifugal pump herborner.S was developed for applications in the industrial and maritime market. This pump combines high efficiency with an excellent self-priming ability and low NPSH values.



UNISELB

The self-priming Uniselb type is suitable for suction applications near physical limits or problematic fluids with contaminations. Please contact us for correct pump selection.



UNIPUMP

UNIPUMP sewage water block pumps are compact continuous running pumps for sewage and waste water applications. Due to their individual design according to customer requirements in connection with high stability, these pumps are an important solution for challenging waste water applications. Thanks to maximum reliability, these pumps support faultless operation of sewage pumping units.



UNIVERS-A

The sewage block pump series UNIVERS-A enables numerous pumping applications for sewage and waste water based on various hydraulic pump systems. This flexibility is also reflected in the variety in diverse motor concepts. This enables adjustment of the overall efficiency of the unit to meet the individual requirements of customers.



UNIVERS-T

Submersible sewage pumps type UNIVERS-T are particularly suitable for untreated sewage and waste water applications. Thanks to maximum reliability, these pumps support faultless operation of sewage pumping units.



UNIVERS-T-SG

Pumps of the UNIVERS-T-SG series can handle sand, grit or any other abrasive sediments in the medium. The internal lining with a special rubber coating prevents abrasion of the cast parts and guarantees a long service life. The pump is a prime example of how we contribute to reduced life cycle costs (LCC) by means of intelligent pump design.



UNICUT-V

The UNICUT-V compact unit combines a vacuum pump and a sewage block pump with integrated cutting unit. A central motor is the base of every unit and drives the vacuum pump and the sewage block pump. Due to their central drive, the two sizes of the UNICUT-V offer small dimensions. As a consequence, they can be operated in very restricted areas. The compact units are available individually or with an upstream tank for separation of the air/sewage mixture.



UNIPUMP-V

The compact unit, consisting of the close coupled sewage pump and the vacuum pump, is suitable for vacuum generation and sewage pumping. The motor is the heart of the unit and mounted below the vacuum pump. Due to this compact design it can be installed in small places. The UNIPUMP-V is available with a dry-running rotary vane vacuum pump or a claw vacuum pump. To separate the air/sewage mixture a collection tank can be supplied.



UNIVERS-T-HYDRO

Pumps of series UNIVERST-Hydro are suitable for the pumping of uncleaned sewage and dirty water. The pump unit is driven by a hydraulic motor as an alternative to an electric drive. For example it is used in commercial vehicles, for the construction industry, the agriculture and cleaning technology as well as on ships and in other industries.



281S

A true classic among centrifugal pumps for pit drainage. Thanks to numerous modular options, this pump series offers the perfect model for almost any application – up to 10 m immersion depth.



282

The sturdy drainage pump for clean water, turbid water, coolants and emulsions. The vertical design of the 282 also makes it the perfect solution for hot water and condensate up to temperatures of 90 °C. The pump can be produced in different lengths (from 50 cm up to 2 m of submersion).

HERBORNER PUMP COATING

All of the pumps in the herborner series offer 100% corrosion protection thanks to HPC (Herborner pump coating).

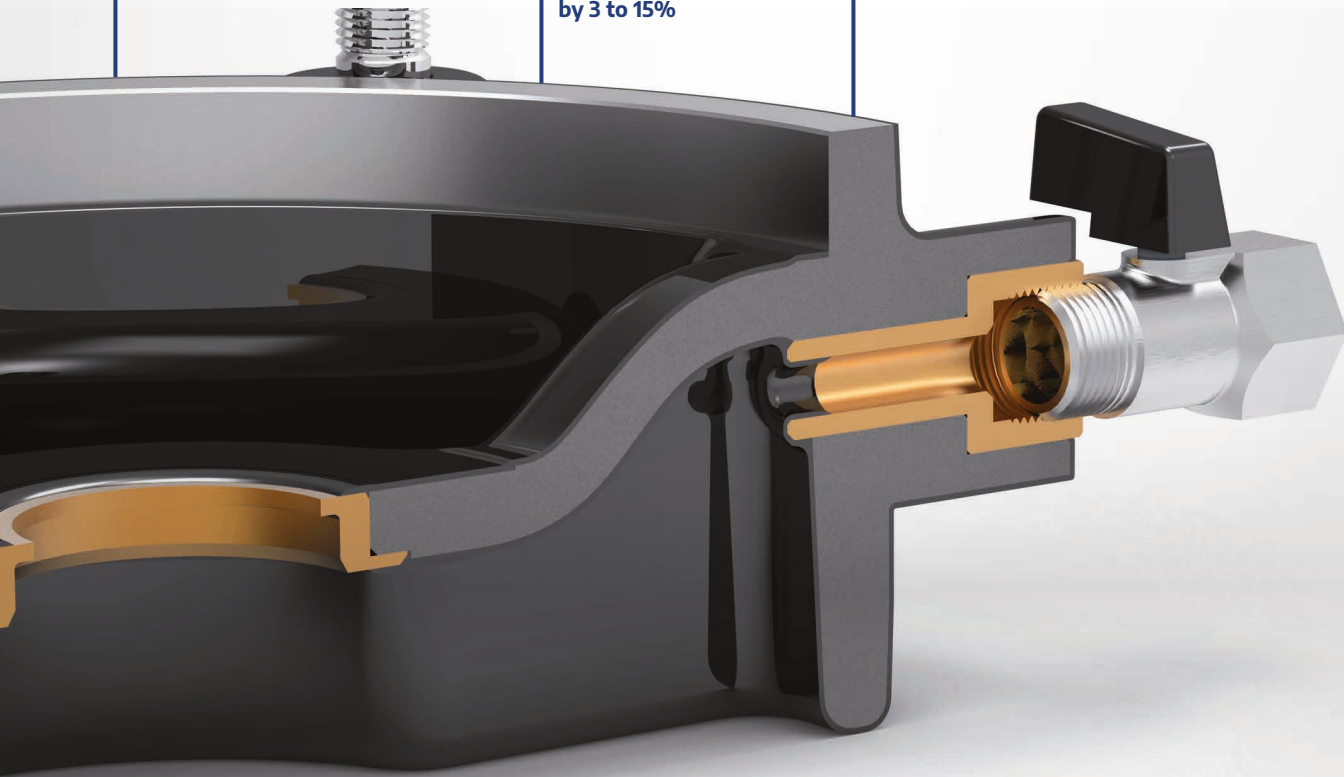
This high-quality, specially developed HPC finish provides the best possible protection against wear, corrosion and adhesions. The smooth surfaces offer unprecedented pump

efficiency. Simple installation and secure startup, even after longer downtimes, are guaranteed with this series.

Extremely smooth layer
over the cast iron

Resistant to industrial
process water

Improves efficiency
by 3 to 15%





SPECIAL SOLUTIONS

Individual solutions For special pumps are part of our service offer.

Decades of experience in the development of pumps and systems, as well as the production facilities in the centre of Germany with in-house foundry and model assembly, are the basis of project-specific adaptation abilities. These are the technological pre-conditions to offer constant innovations and adjustments according to our customers requirements.

SPECIAL DESIGNS

- Deviations in the constructive design
- Integration of system components as machine lay-out
- Deviating voltage and/or power frequency
- Different isolation class
- Increased engine efficiency up to IE5
- Engine-mounted frequency converter
- Increased ambient temperature
- Increased degree of protection
- Increased tropical and humidity protection
- Special materials
- Special coating for all uncoated single parts
- Other customer-specific solutions







3D-SANDPRINT

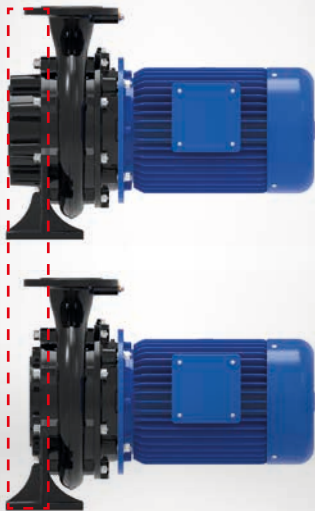
CUSTOMER-SPECIFIC ORDER PRODUCTION OF SPECIAL PUMPS

The 3D-sandprint enables the production of highly complex sand moulds by a CAD-model. Changes to the design can be implemented quickly and cost-efficiently without making new foundry models. Special customer demands can be fulfilled fast and cost-effective.



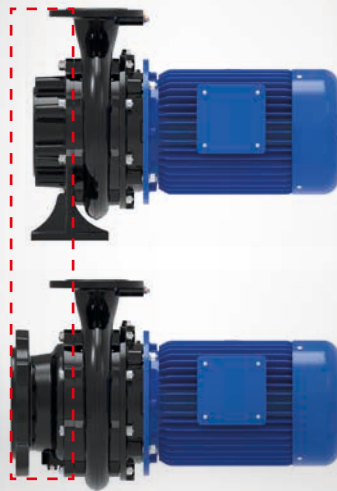


Standard cover



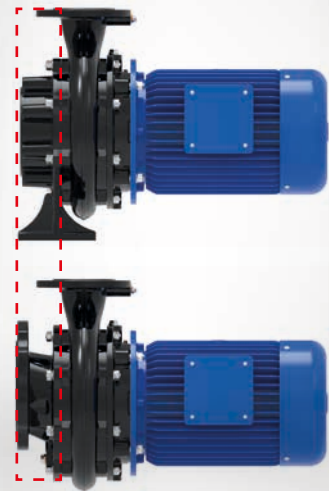
Short cover

Standard cover



Flange cover

Standard cover



Cover with adapted suction flange
to meet existing installation conditions